



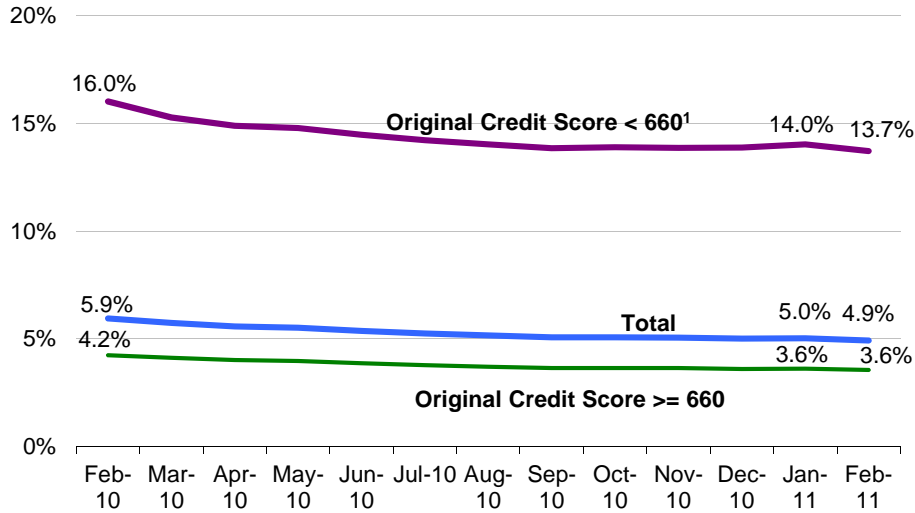
Federal Housing Finance Agency

Foreclosure Prevention & Refinance Report February 2011

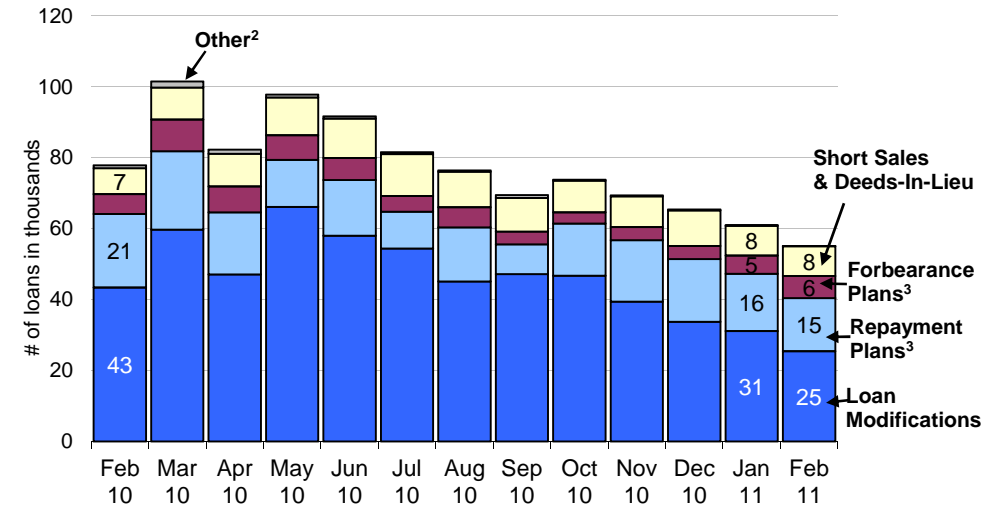
FHFA Federal Property Manager's Report

This report contains data on foreclosure prevention activity, refinance and MHA program activity of Fannie Mae and Freddie Mac (the Enterprises) through February 2011.

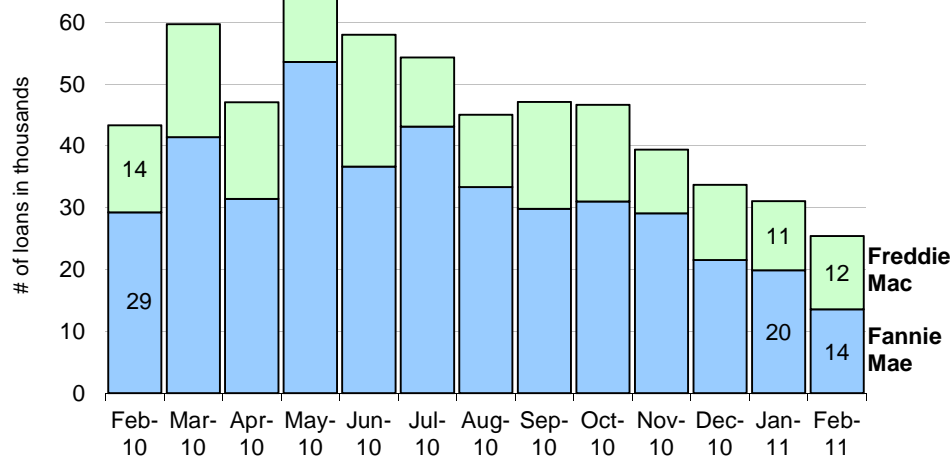
60-plus-days Delinquency Rates
Delinquency rates declined in February.



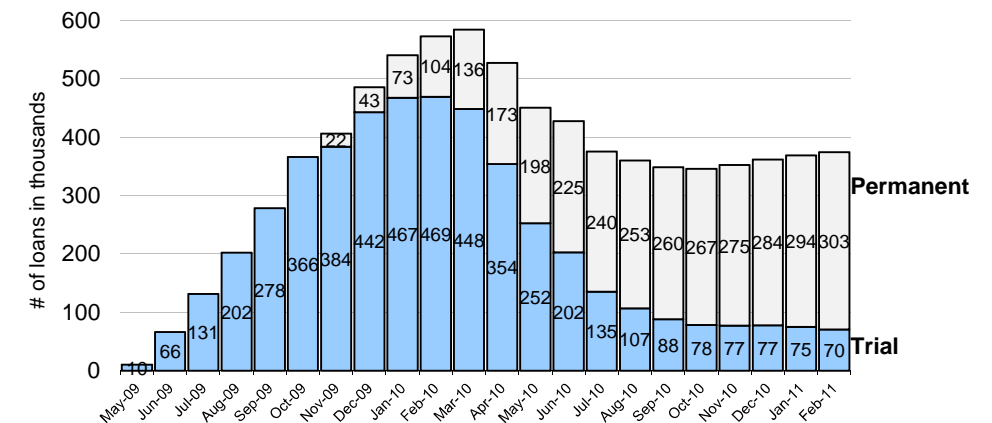
Foreclosure Prevention Actions Completed
Completed foreclosure prevention actions continued to decline in February driven primarily by loan modifications.



Completed loan modifications
Completed loan modifications decreased for the fifth consecutive month in February.



HAMP Active Trial and Permanent Modifications - Cumulative⁴
HAMP active permanent modifications increased while active trials declined in February.



Source: Weekly Servicer Survey through September 2009. IR2 (Making Home Affordable system of records) starting in October 2009.

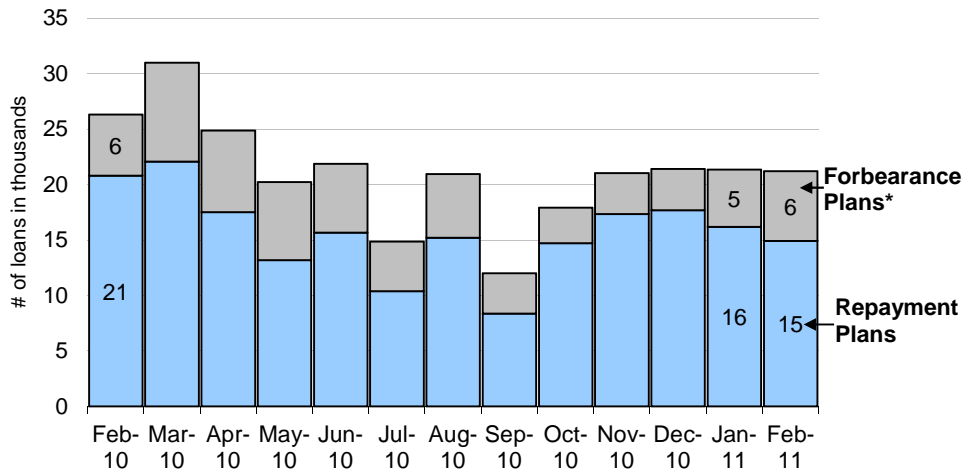
¹ Includes loans with missing original credit score.

² Consists of HomeSaver Advance (Fannie Mae) and Charge-offs in lieu.

³ Includes loans that were 30+ days delinquent at initiation of the plan. In addition, the completed forbearance plans data have been revised to exclude HAMP.

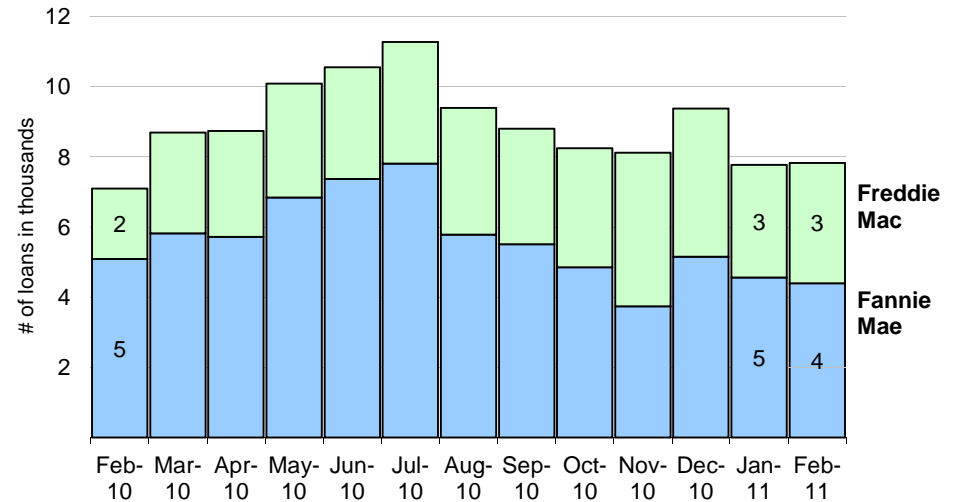
⁴ HAMP trial modifications are based on the first trial payment posted date. HAMP permanent modifications are based on the effective date of modification. As of February 28, 2011, Fannie Mae had completed approximately 185,500 HAMP permanent modifications and Freddie Mac had completed nearly 117,900 HAMP permanent modifications.

Repayment Plans and Forbearance Plans Completed
Completed repayment plans decreased while forbearance plans increased in February.



* Data have been revised to exclude HAMP.

Short Sales
Completed short sales remained steady in February.



Foreclosure Prevention Activity

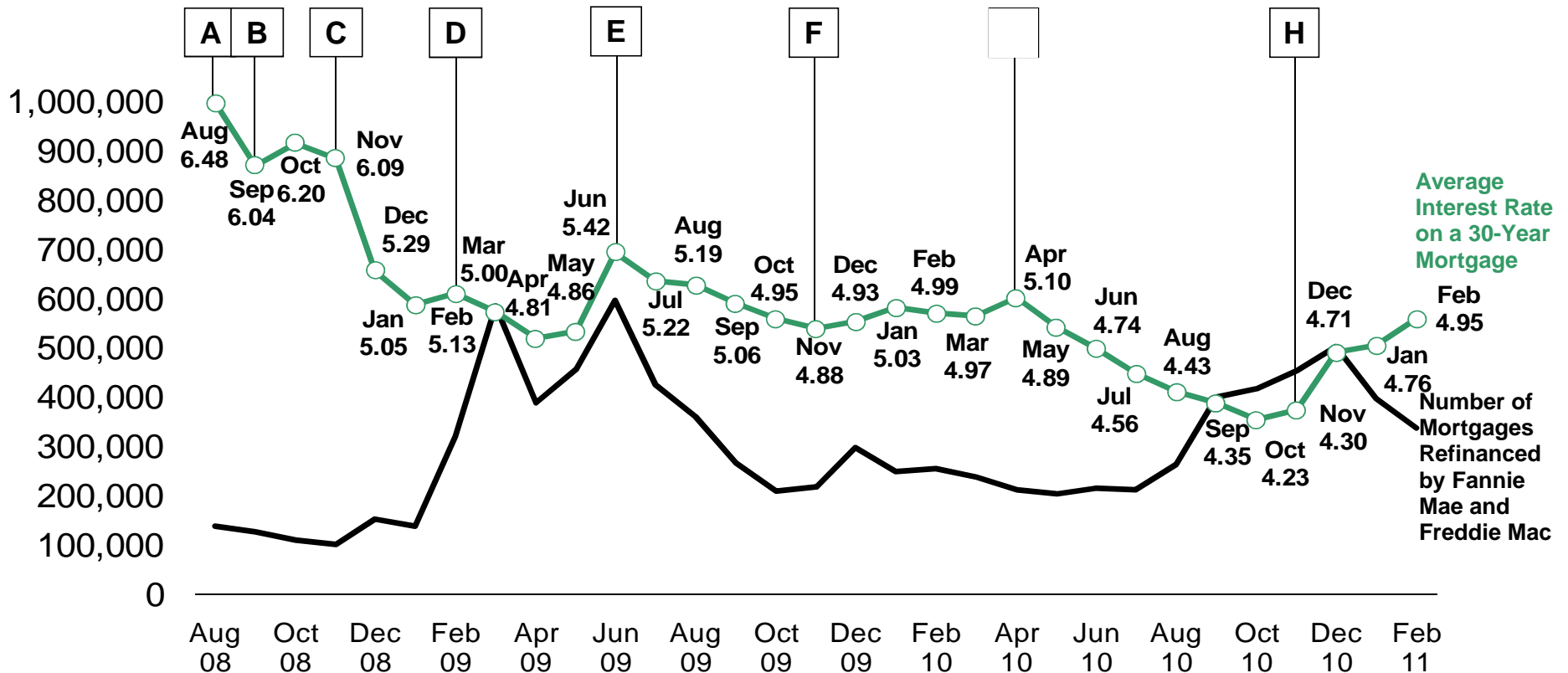
Since the first full quarter in conservatorship (4Q08), combined completed foreclosure prevention actions total nearly 1.6 million.

(Completed Actions)	Full Year 2008	Full Year 2009	Full Year 2010	YTD Feb-11	Conservatorship to Date ¹
Home Retention Actions					
Repayment Plans	62,560	142,360	185,954	31,090	372,713
Forbearance Plans	5,692	25,227	63,024	11,451	101,818
Charge-offs in Lieu	799	2,247	3,118	192	5,830
HomeSaver Advance (Fannie)	70,967	39,199	5,191	-	70,178
Loan Modifications	68,307	163,647	575,022	56,484	818,930
Total	208,325	372,680	832,309	99,217	1,369,469
Nonforeclosure - Home Forfeiture Actions					
Short Sales	15,704	55,447	107,953	15,595	185,187
Deeds-in-lieu	1,511	2,971	6,043	1,170	10,724
Total	17,215	58,418	113,996	16,765	195,911
Total Foreclosure Prevention Actions	225,540	431,098	946,305	115,982	1,565,380

¹ Since the first full quarter in conservatorship (4Q08).

Mortgage Rates and Refinance Volumes

Refinance volume fell in February 2011 as mortgage rates continued to rise after reaching historic lows in October 2010.



- A - Highest rate in 2008 for a 30-year mortgage.
- B - GSEs placed into conservatorship on 09/06/08.
- C - Fed announces MBS purchase program on 11/25/08.
- D - Making Home Affordable announcement 02/20/09.
- E - Treasury rates sharply rose and reached a 2009 high on a better than expected unemployment report in June.

- F - Treasury rates fell sharply after Dubai sought to delay sovereign debt payments.
- G - Treasury rates rose on optimism of a recovering U.S. economy and a temporary lull in news of a developing debt crisis in Europe.
- H - 30-year mortgage rates reached 4.17% in early November, marking the the lowest level observed since Freddie Mac began tracking mortgage rates in 1971.

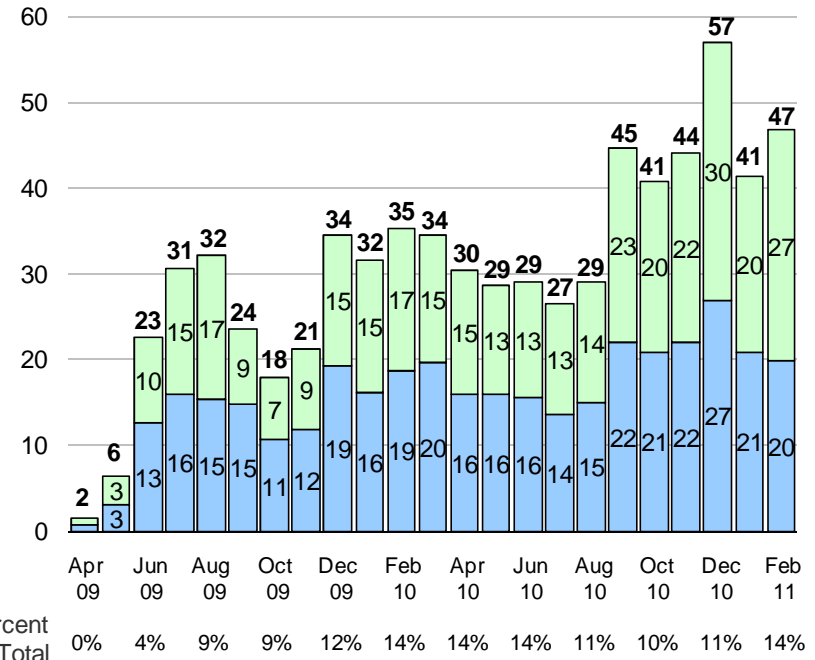
Fannie Mae and Freddie Mac Refinance Volumes

Fannie Mae and Freddie Mac refinanced over 709,900 loans through the HARP program through February 2011.

	February 2011	Year to Date	Inception to Date ¹
Total Refinances			
Fannie Mae	188,307	435,858	4,452,056
Freddie Mac	147,719	294,321	3,088,870
Total	336,026	730,179	7,540,926
HARP LTV >80% -105%			
Fannie Mae	17,825	36,895	350,321
Freddie Mac	22,896	40,915	318,675
Total	40,721	77,810	668,996
HARP LTV >105% -125%			
Fannie Mae	1,932	3,748	16,751
Freddie Mac	4,104	6,535	24,155
Total	6,036	10,283	40,906
All Other Streamlined Refis			
Fannie Mae	40,910	85,995	750,509
Freddie Mac	35,215	64,972	471,978
Total	76,125	150,967	1,222,487

Fannie Mae and Freddie Mac HARP vs Total Refinance
Monthly HARP volume rose in February.

HARP Refinance, Monthly Volume
(Number of loans in thousands)



Notes:

HARP Refinance Loans are defined as Fannie Mae to Fannie Mae and Freddie Mac to Freddie Mac first lien refinance loans with limited and no cash out that are owner-occupied with LTVs between 80% and 125%.

All Other Streamlined Refis are streamlined refinances that do not qualify as HARP (LTVs between 80% and 125%) refinances. Fannie Mae implements streamlined refinances through the Refi Plus product for manual underwriting and DU Refi Plus product for loans underwritten through Desktop Underwriter. The product is available for refinances of existing Fannie Mae loans only. Freddie Mac implements streamlined refinances through the Relief Refinance Mortgage product. Loans may be originated by any Freddie Mac approved servicer.

¹ Inception to Date - Since April 1, 2009

Appendix: Data Tables

1(i) Enterprises Combined - Mortgage Performance (at period end)

(# of loans in thousands)	Feb-10	Mar-10	Apr-10	May-10	Jun-10	Jul-10	Aug-10	Sep-10	Oct-10	Nov-10	Dec-10	Jan-11	Feb-11
Total Loans Serviced	30,522	30,454	30,376	30,330	30,265	30,170	29,967	29,896	29,809	29,723	29,717	29,740	29,799
Original Credit Score >= 660	26,087	26,052	26,009	25,996	25,963	25,903	25,742	25,711	25,662	25,612	25,641	25,696	25,780
Original Credit Score < 660	4,435	4,401	4,366	4,334	4,302	4,266	4,224	4,185	4,147	4,111	4,076	4,045	4,019
Total Delinquent Loans	2,589	2,355	2,310	2,359	2,288	2,241	2,207	2,196	2,219	2,187	2,148	2,155	2,139
Original Credit Score >= 660	1,556	1,419	1,391	1,417	1,372	1,341	1,318	1,313	1,329	1,313	1,284	1,293	1,300
Original Credit Score < 660	1,033	936	919	943	916	900	889	882	891	874	863	863	839
30 - 59 Days Delinquent	775	609	618	689	664	658	661	682	708	686	659	662	672
Original Credit Score >= 660	453	345	348	387	370	365	364	378	393	381	362	366	384
Original Credit Score < 660	323	264	269	302	294	294	297	303	315	305	298	296	288
60 - 89 Days Delinquent	293	259	248	258	255	256	255	258	262	255	247	248	236
Original Credit Score >= 660	170	154	144	148	145	145	143	144	146	142	136	137	133
Original Credit Score < 660	123	105	104	110	110	111	112	114	116	114	111	112	103
60-plus-days Delinquent	1,814	1,746	1,693	1,670	1,624	1,583	1,546	1,514	1,511	1,501	1,488	1,493	1,467
Original Credit Score >= 660	1,104	1,074	1,043	1,030	1,001	976	954	935	936	932	923	926	916
Original Credit Score < 660	710	672	650	640	622	606	592	579	576	569	565	567	551
Percent of Total Loans Serviced													
Total Delinquent Loans	8.48%	7.73%	7.61%	7.78%	7.56%	7.43%	7.37%	7.34%	7.45%	7.36%	7.23%	7.25%	7.18%
Original Credit Score >= 660	5.97%	5.45%	5.35%	5.45%	5.28%	5.18%	5.12%	5.11%	5.18%	5.13%	5.01%	5.03%	5.04%
Original Credit Score < 660	23.29%	21.26%	21.05%	21.75%	21.30%	21.09%	21.05%	21.09%	21.48%	21.26%	21.18%	21.33%	20.87%
30 - 59 Days Delinquent	2.54%	2.00%	2.03%	2.27%	2.19%	2.18%	2.21%	2.28%	2.38%	2.31%	2.22%	2.23%	2.25%
Original Credit Score >= 660	1.74%	1.32%	1.34%	1.49%	1.43%	1.41%	1.41%	1.47%	1.53%	1.49%	1.41%	1.43%	1.49%
Original Credit Score < 660	7.28%	6.00%	6.17%	6.98%	6.84%	6.88%	7.03%	7.25%	7.59%	7.41%	7.31%	7.31%	7.16%
60 - 89 Days Delinquent	0.96%	0.85%	0.82%	0.85%	0.84%	0.85%	0.85%	0.86%	0.88%	0.86%	0.83%	0.84%	0.79%
Original Credit Score >= 660	0.65%	0.59%	0.56%	0.57%	0.56%	0.56%	0.56%	0.56%	0.57%	0.55%	0.53%	0.53%	0.51%
Original Credit Score < 660	2.77%	2.39%	2.37%	2.53%	2.55%	2.60%	2.65%	2.73%	2.79%	2.76%	2.72%	2.76%	2.56%
60-plus-days Delinquent	5.94%	5.73%	5.57%	5.51%	5.36%	5.25%	5.16%	5.06%	5.07%	5.05%	5.01%	5.02%	4.92%
Original Credit Score >= 660	4.23%	4.12%	4.01%	3.96%	3.86%	3.77%	3.70%	3.64%	3.65%	3.64%	3.60%	3.60%	3.55%
Original Credit Score < 660	16.01%	15.26%	14.88%	14.77%	14.46%	14.21%	14.02%	13.83%	13.89%	13.85%	13.87%	14.02%	13.71%
Serious Delinquency Rate	5.03%	4.93%	4.80%	4.71%	4.58%	4.45%	4.35%	4.26%	4.24%	4.24%	4.23%	4.20%	4.18%
In Bankruptcy	0.38%	0.39%	0.41%	0.42%	0.42%	0.44%	0.46%	0.47%	0.48%	0.48%	0.50%	0.50%	0.50%

Appendix: Data Tables

1(ii) Fannie Mae - Mortgage Performance (at period end)

(# of loans in thousands)	Feb-10	Mar-10	Apr-10	May-10	Jun-10	Jul-10	Aug-10	Sep-10	Oct-10	Nov-10	Dec-10	Jan-11	Feb-11
Total Loans Serviced	18,288	18,234	18,186	18,157	18,109	18,060	17,947	17,946	17,928	17,905	17,933	17,975	18,003
Original Credit Score >= 660	15,506	15,475	15,450	15,443	15,419	15,393	15,307	15,331	15,335	15,333	15,383	15,444	15,489
Original Credit Score < 660	2,781	2,759	2,736	2,715	2,691	2,668	2,640	2,615	2,593	2,571	2,550	2,531	2,514
Total Delinquent Loans	1,699	1,549	1,517	1,544	1,493	1,455	1,429	1,419	1,429	1,407	1,382	1,378	1,377
Original Credit Score >= 660	1,016	930	909	924	892	867	849	844	851	840	822	822	833
Original Credit Score < 660	683	620	607	621	602	588	580	575	578	566	560	556	544
30 - 59 Days Delinquent	489	384	391	441	424	419	419	434	449	436	419	419	426
Original Credit Score >= 660	282	214	217	244	233	229	227	237	245	238	225	228	240
Original Credit Score < 660	207	170	174	197	191	190	193	197	204	198	194	191	186
60 - 89 Days Delinquent	186	166	160	166	164	164	164	165	168	164	158	157	149
Original Credit Score >= 660	108	98	93	95	93	93	91	91	93	90	86	85	83
Original Credit Score < 660	79	68	67	71	71	72	72	74	75	74	72	72	66
60-plus-days Delinquent	1,210	1,166	1,126	1,104	1,070	1,037	1,009	985	980	971	964	959	951
Original Credit Score >= 660	734	715	692	680	659	638	622	607	606	602	597	594	593
Original Credit Score < 660	476	450	433	424	411	398	388	377	374	369	367	365	358
Percent of Total Loans Serviced													
Total Delinquent Loans	9.29%	8.50%	8.34%	8.50%	8.25%	8.06%	7.96%	7.91%	7.97%	7.86%	7.71%	7.66%	7.65%
Original Credit Score >= 660	6.56%	6.01%	5.89%	5.98%	5.78%	5.63%	5.54%	5.51%	5.55%	5.48%	5.34%	5.32%	5.38%
Original Credit Score < 660	24.55%	22.47%	22.20%	22.86%	22.36%	22.05%	21.98%	21.97%	22.27%	22.03%	21.97%	21.97%	21.63%
30 - 59 Days Delinquent	2.68%	2.10%	2.15%	2.43%	2.34%	2.32%	2.34%	2.42%	2.50%	2.43%	2.34%	2.33%	2.37%
Original Credit Score >= 660	1.82%	1.38%	1.40%	1.58%	1.51%	1.49%	1.48%	1.54%	1.60%	1.55%	1.46%	1.47%	1.55%
Original Credit Score < 660	7.45%	6.15%	6.36%	7.24%	7.09%	7.13%	7.29%	7.54%	7.85%	7.68%	7.59%	7.56%	7.41%
60 - 89 Days Delinquent	1.02%	0.91%	0.88%	0.91%	0.91%	0.91%	0.91%	0.92%	0.94%	0.92%	0.88%	0.87%	0.83%
Original Credit Score >= 660	0.69%	0.63%	0.60%	0.61%	0.60%	0.60%	0.60%	0.60%	0.60%	0.59%	0.56%	0.55%	0.54%
Original Credit Score < 660	2.82%	2.47%	2.45%	2.61%	2.66%	2.68%	2.75%	2.82%	2.89%	2.88%	2.82%	2.83%	2.62%
60-plus-days Delinquent	6.62%	6.39%	6.19%	6.08%	5.91%	5.74%	5.62%	5.49%	5.47%	5.42%	5.37%	5.33%	5.28%
Original Credit Score >= 660	4.74%	4.62%	4.48%	4.40%	4.27%	4.15%	4.06%	3.96%	3.95%	3.93%	3.88%	3.85%	3.83%
Original Credit Score < 660	17.10%	16.32%	15.84%	15.62%	15.27%	14.93%	14.68%	14.43%	14.42%	14.35%	14.38%	14.41%	14.23%
Serious Delinquency Rate	5.59%	5.47%	5.30%	5.15%	4.99%	4.82%	4.70%	4.56%	4.52%	4.50%	4.48%	4.45%	4.44%
In Bankruptcy	0.42%	0.42%	0.45%	0.47%	0.46%	0.49%	0.50%	0.51%	0.51%	0.52%	0.54%	0.54%	0.53%

Appendix: Data Tables

1(iii) Freddie Mac - Mortgage Performance (at period end)

(# of loans in thousands)	Feb-10	Mar-10	Apr-10	May-10	Jun-10	Jul-10	Aug-10	Sep-10	Oct-10	Nov-10	Dec-10	Jan-11	Feb-11
Total Loans Serviced	12,235	12,220	12,190	12,173	12,156	12,109	12,019	11,950	11,881	11,818	11,784	11,765	11,796
Original Credit Score >= 660	10,580	10,577	10,559	10,554	10,544	10,510	10,435	10,381	10,327	10,278	10,258	10,252	10,291
Original Credit Score < 660	1,654	1,642	1,630	1,619	1,612	1,599	1,584	1,569	1,554	1,540	1,526	1,514	1,505
Total Delinquent Loans	890	805	794	815	795	786	778	777	791	780	765	778	762
Original Credit Score >= 660	540	489	482	493	480	474	469	469	477	472	462	471	467
Original Credit Score < 660	350	316	312	322	315	311	309	308	313	308	303	307	295
30 - 59 Days Delinquent	286	225	227	248	241	240	242	248	259	250	240	243	246
Original Credit Score >= 660	171	131	131	143	138	136	137	142	148	143	136	139	144
Original Credit Score < 660	116	94	95	106	103	104	104	106	111	107	104	104	101
60 - 89 Days Delinquent	107	93	88	92	90	92	91	93	94	92	90	91	87
Original Credit Score >= 660	63	56	52	53	52	53	52	53	54	52	51	51	50
Original Credit Score < 660	44	37	37	39	38	39	39	40	41	40	39	40	37
60-plus-days Delinquent	604	580	567	567	554	546	536	529	531	530	525	535	516
Original Credit Score >= 660	369	358	351	351	343	338	332	327	329	329	326	332	323
Original Credit Score < 660	235	222	216	216	211	208	205	201	202	200	199	202	193
Percent of Total Loans Serviced													
Total Delinquent Loans	7.27%	6.59%	6.51%	6.70%	6.54%	6.49%	6.48%	6.50%	6.65%	6.60%	6.49%	6.61%	6.46%
Original Credit Score >= 660	5.10%	4.63%	4.56%	4.67%	4.55%	4.51%	4.50%	4.52%	4.62%	4.59%	4.51%	4.60%	4.54%
Original Credit Score < 660	21.17%	19.24%	19.12%	19.89%	19.52%	19.48%	19.50%	19.61%	20.16%	19.98%	19.85%	20.27%	19.59%
30 - 59 Days Delinquent	2.34%	1.84%	1.86%	2.04%	1.98%	1.98%	2.01%	2.08%	2.18%	2.12%	2.04%	2.07%	2.08%
Original Credit Score >= 660	1.61%	1.24%	1.24%	1.35%	1.30%	1.29%	1.32%	1.37%	1.43%	1.39%	1.33%	1.35%	1.40%
Original Credit Score < 660	6.98%	5.75%	5.86%	6.53%	6.40%	6.48%	6.59%	6.78%	7.16%	6.96%	6.83%	6.90%	6.74%
60 - 89 Days Delinquent	0.87%	0.76%	0.72%	0.76%	0.74%	0.76%	0.76%	0.78%	0.80%	0.77%	0.76%	0.78%	0.74%
Original Credit Score >= 660	0.59%	0.53%	0.49%	0.51%	0.49%	0.50%	0.50%	0.51%	0.52%	0.51%	0.49%	0.50%	0.48%
Original Credit Score < 660	2.67%	2.27%	2.24%	2.39%	2.38%	2.45%	2.48%	2.58%	2.63%	2.57%	2.56%	2.65%	2.46%
60-plus-days Delinquent	4.94%	4.75%	4.65%	4.66%	4.56%	4.51%	4.46%	4.43%	4.47%	4.48%	4.45%	4.54%	4.38%
Original Credit Score >= 660	3.49%	3.39%	3.32%	3.32%	3.25%	3.22%	3.18%	3.15%	3.19%	3.20%	3.18%	3.24%	3.14%
Original Credit Score < 660	14.19%	13.49%	13.27%	13.36%	13.12%	13.00%	12.92%	12.83%	13.00%	13.02%	13.02%	13.37%	12.85%
Serious Delinquency Rate	4.20%	4.13%	4.06%	4.06%	3.96%	3.89%	3.83%	3.80%	3.82%	3.85%	3.84%	3.82%	3.78%
In Bankruptcy	0.33%	0.33%	0.34%	0.36%	0.36%	0.37%	0.39%	0.41%	0.42%	0.42%	0.44%	0.43%	0.46%

Appendix: Data Tables

2 Enterprises Combined - Foreclosure Prevention Actions (# of loans)¹

	Feb-10	Mar-10	Apr-10	May-10	Jun-10	Jul-10	Aug-10	Sep-10	Oct-10	Nov-10	Dec-10	Jan-11	Feb-11	YTD Feb-11
Starts²														
HAMP Active Trial & Perm. - Cum.	572,650	584,086	526,882	450,133	426,978	375,409	359,734	348,171	345,415	351,958	361,510	368,875	373,825	373,825
Repayment Plans	48,777	46,908	41,447	44,079	35,727	57,754	27,725	73,759	52,385	47,277	52,709	22,584	16,576	39,160
Forbearance Plans	89,137	55,276	47,561	35,652	27,558	25,409	24,007	27,928	37,145	27,148	28,334	66,134	26,079	92,213
Completed														
Repayment Plans ³	20,788	22,065	17,512	13,187	15,654	10,378	15,217	8,369	14,728	17,350	17,675	16,176	14,914	31,090
Forbearance Plans ³	5,525	8,905	7,342	7,029	6,214	4,481	5,734	3,648	3,177	3,681	3,727	5,172	6,279	11,451
Charge-offs in Lieu	183	373	415	216	125	181	152	659	183	268	214	106	86	192
HomeSaver Advance (Fannie)	632	1,297	732	569	482	362	249	183	26	-	-	-	-	-
Loan Modifications	43,339	59,720	47,051	66,122	58,003	54,319	45,051	47,137	46,670	39,396	33,712	31,060	25,424	56,484
Home Retention Actions	70,467	92,360	73,052	87,123	80,478	69,721	66,403	59,996	64,784	60,695	55,328	52,514	46,703	99,217
Short Sales	7,092	8,687	8,741	10,082	10,552	11,276	9,392	8,797	8,241	8,120	9,373	7,768	7,827	15,595
Deeds-in-lieu	290	360	434	515	557	499	594	635	703	545	627	630	540	1,170
Nonforeclosure - Home Forfeiture Actions	7,382	9,047	9,175	10,597	11,109	11,775	9,986	9,432	8,944	8,665	10,000	8,398	8,367	16,765
Total Foreclosure Prevention Actions	77,849	101,407	82,227	97,720	91,587	81,496	76,389	69,428	73,728	69,360	65,328	60,912	55,070	115,982

Percent of Total Foreclosure Prevention Actions

Repayment Plans	27%	22%	21%	13%	17%	13%	20%	12%	20%	25%	27%	27%	27%	27%
Forbearance Plans	7%	9%	9%	7%	7%	5%	8%	5%	4%	5%	6%	8%	11%	10%
Charge-offs in Lieu	0%	0%	1%	0%	0%	0%	0%	1%	0%	0%	0%	0%	0%	0%
HomeSaver Advance (Fannie)	1%	1%	1%	1%	1%	0%	0%	0%	0%	0%	0%	0%	0%	0%
Loan Modifications	56%	59%	57%	68%	63%	67%	59%	68%	63%	57%	52%	51%	46%	49%
Home Retention Actions	91%	91%	89%	89%	88%	86%	87%	86%	88%	88%	85%	86%	85%	86%
Short Sales	9%	9%	11%	10%	12%	14%	12%	13%	11%	12%	14%	13%	14%	13%
Deeds-in-lieu	0%	0%	1%	1%	1%	1%	1%	1%	1%	1%	1%	1%	1%	1%
Nonforeclosure - Home Forfeiture Actions	9%	9%	11%	11%	12%	14%	13%	14%	12%	12%	15%	14%	15%	14%

¹ The number of foreclosure prevention actions reported in this table may not tie to the Enterprises' financial statements due to timing differences in reporting systems.² Forbearance plans initiated include HAMP trials initiated by servicers under the MHA program. In addition, starting in August, forbearance plans initiated include Fannie Mae's HomeSaver forbearance plans. HAMP trial modifications are based on the first trial payment posted date. HAMP permanent modifications are based on the effective date of modification. As of February 28, 2011, Fannie Mae had completed approximately 185,500 HAMP permanent modifications and Freddie Mac had completed nearly 117,900 HAMP permanent modifications.³ Includes loans that were 30+ days delinquent at initiation of the plan. In addition, the completed forbearance plans data have been revised to exclude HAMP.

Appendix: Data Tables

3(i) Enterprises Combined - Loan Modifications

	Feb-10	Mar-10	Apr-10	May-10	Jun-10	Jul-10	Aug-10	Sep-10	Oct-10	Nov-10	Dec-10	Jan-11	Feb-11	YTD Feb-11
Loan Modifications (<i># of loans</i>)	43,339	59,720	47,051	66,122	58,003	54,319	45,051	47,137	46,670	39,396	33,712	31,060	25,424	56,484
Type of Modifications (%)														
Extend Term Only	4%	3%	5%	3%	4%	3%	5%	5%	7%	7%	6%	5%	9%	7%
Reduce Rate Only	33%	35%	31%	33%	29%	32%	30%	28%	28%	28%	28%	26%	30%	28%
Extend Term and Reduce Rate*	57%	53%	57%	59%	62%	61%	60%	59%	59%	57%	59%	61%	57%	59%
Other	7%	9%	7%	4%	5%	4%	6%	8%	7%	8%	7%	8%	4%	7%

* Includes extend term, reduce rate and forbear

Appendix: Data Tables

3(ii) Fannie Mae - Loan Modifications

	Feb-10	Mar-10	Apr-10	May-10	Jun-10	Jul-10	Aug-10	Sep-10	Oct-10	Nov-10	Dec-10	Jan-11	Feb-11	YTD Feb-11
Loan Modifications (# of loans)	29,271	41,408	31,434	53,580	36,679	43,140	33,378	29,847	31,022	29,114	21,556	19,907	13,560	33,467
Type of Modifications (%)														
Extend Term Only	1%	1%	1%	1%	1%	1%	1%	2%	2%	2%	1%	1%	3%	2%
Reduce Rate Only	38%	40%	37%	37%	31%	36%	35%	34%	35%	35%	35%	33%	33%	33%
Extend Term and Reduce Rate*	55%	49%	54%	58%	63%	60%	58%	54%	56%	55%	57%	61%	59%	60%
Other	6%	10%	8%	4%	5%	3%	6%	9%	7%	8%	7%	4%	5%	4%

* Includes extend term, reduce rate and forbear

Appendix: Data Tables

3(iii) Freddie Mac - Loan Modifications

	Feb-10	Mar-10	Apr-10	May-10	Jun-10	Jul-10	Aug-10	Sep-10	Oct-10	Nov-10	Dec-10	Jan-11	Feb-11	YTD Feb-11
Loan Modifications (<i># of loans</i>)	14,068	18,312	15,617	12,542	21,324	11,179	11,673	17,290	15,648	10,282	12,156	11,153	11,864	23,017
Type of Modifications (%)														
Extend Term Only	9%	9%	13%	13%	9%	12%	16%	10%	16%	20%	13%	12%	16%	14%
Reduce Rate Only	21%	23%	20%	16%	25%	18%	14%	18%	14%	9%	15%	12%	26%	19%
Extend Term and Reduce Rate*	62%	62%	61%	64%	61%	62%	63%	67%	63%	63%	64%	60%	54%	57%
Other	8%	5%	6%	7%	5%	8%	7%	5%	7%	8%	8%	16%	4%	10%

* Includes extend term, reduce rate and forbear

Appendix: Data Tables

4 Enterprises Combined - Home Forfeiture Actions (# of loans)

	Feb-10	Mar-10	Apr-10	May-10	Jun-10	Jul-10	Aug-10	Sep-10	Oct-10	Nov-10	Dec-10	Jan-11	Feb-11	YTD Feb-11
Short Sales	7,092	8,687	8,741	10,082	10,552	11,276	9,392	8,797	8,241	8,120	9,373	7,768	7,827	15,595
Deeds-in-lieu	290	360	434	515	557	499	594	635	703	545	627	630	540	1,170
Nonforeclosure - Home Forfeiture Actions*	7,382	9,047	9,175	10,597	11,109	11,775	9,986	9,432	8,944	8,665	10,000	8,398	8,367	16,765
Third-party Sales	1,677	1,741	2,278	2,304	3,274	3,384	4,302	4,313	3,437	2,209	2,240	2,742	2,662	5,404
Foreclosure Sales	25,165	36,369	35,769	31,394	37,334	39,120	42,032	44,906	27,458	19,379	21,922	25,295	21,754	47,049
Third-party & Foreclosure Sales	26,842	38,110	38,047	33,698	40,608	42,504	46,334	49,219	30,895	21,588	24,162	28,037	24,416	52,453
Foreclosure Starts	71,045	77,792	88,551	91,968	94,576	121,696	118,547	98,714	98,942	99,487	111,547	91,204	66,477	157,681
Top Five Reasons for Delinquency														
Curtailed of Income	48%	49%	49%	48%	48%	48%	47%	47%	47%	47%	45%	45%	45%	
Excessive obligations	13%	13%	13%	14%	14%	14%	14%	14%	13%	13%	14%	14%	14%	
Unemployment	8%	8%	8%	8%	8%	8%	8%	8%	8%	8%	8%	8%	8%	
Illness of principal mortgagor or family member	5%	5%	5%	5%	5%	5%	5%	5%	5%	5%	5%	5%	5%	
Marital Difficulties	3%	3%	3%	3%	3%	3%	3%	3%	3%	3%	3%	3%	3%	

* Short sales and deeds in lieu of foreclosure

Appendix: Data Tables

5 Fannie Mae and Freddie Mac - Refinance Volume (# of loans)

	Dec-09	Jan-10	Feb-10	Mar-10	Apr-10	May-10	Jun-10	Jul-10	Aug-10	Sep-10	Oct-10	Nov-10	Dec-10	Jan-11	Feb-11
Total Refinances															
Fannie Mae	170,578	141,199	146,908	128,922	121,994	118,631	115,955	123,948	156,735	248,579	255,024	268,990	306,966	247,551	188,307
Freddie Mac	126,134	107,589	107,436	106,861	89,651	82,228	98,167	86,925	105,079	150,536	159,872	182,190	194,252	146,602	147,719
Total	296,712	248,788	254,344	235,783	211,645	200,859	214,122	210,873	261,814	399,115	414,896	451,180	501,218	394,153	336,026
HARP LTV >80% -105%															
Fannie Mae	18,775	15,520	18,070	18,751	15,136	15,060	14,787	12,772	14,147	20,667	19,635	20,550	25,182	19,070	17,825
Freddie Mac	14,576	14,751	15,666	14,030	13,396	11,721	12,336	11,859	12,670	20,447	18,552	20,801	26,421	18,019	22,896
Total	33,351	30,271	33,736	32,781	28,532	26,781	27,123	24,631	26,817	41,114	38,187	41,351	51,603	37,089	40,721
HARP LTV >105% -125%															
Fannie Mae	521	626	685	794	809	892	780	800	891	1,326	1,266	1,404	1,760	1,816	1,932
Freddie Mac	590	716	868	924	1,117	989	1,122	1,143	1,222	2,232	1,388	1,335	3,611	2,431	4,104
Total	1,111	1,342	1,553	1,718	1,926	1,881	1,902	1,943	2,113	3,558	2,654	2,739	5,371	4,247	6,036
All Other Streamlined Refis															
Fannie Mae	30,899	26,664	32,092	29,134	26,165	27,010	24,931	25,460	31,366	51,685	49,255	53,353	62,511	45,085	40,910
Freddie Mac	19,616	21,253	22,333	17,060	18,989	16,280	14,716	19,713	22,805	38,139	38,214	43,773	50,576	29,757	35,215
Total	50,515	47,917	54,425	46,194	45,154	43,290	39,647	45,173	54,171	89,824	87,469	97,126	113,087	74,842	76,125

Notes:

HARP Refinance Loans are defined as Fannie Mae to Fannie Mae and Freddie Mac to Freddie Mac first lien refinance loans with limited and no cash out that are owner-occupied with LTVs between 80% and 125%.

All Other Streamlined Refis are streamlined refinances that do not qualify as HARP (LTVs between 80% and 125%) refinances. Fannie Mae implements streamlined refinances through the Refi Plus product for manual underwriting and DU Refi Plus product for loans underwritten through Desktop Underwriter. The product is available for refinances of existing Fannie Mae loans only. Freddie Mac implements streamlined refinances through the Relief Refinance Mortgage product. Loans may be originated by any Freddie Mac approved servicer.

FHFA produces monthly and quarterly versions of the Foreclosure Prevention & Refinance Report. In addition to the data provided in the monthly reports, the quarterly reports include the following information: MHA program updates; benchmarking of the Enterprises' delinquency rates; the type and depth of loan modifications; and the performance of modified loans.

Glossary

Data and definitions in this report have been revised relative to prior versions of the report. FHFA continues to work with the Enterprises to improve the comparability of reported data.

Section 1: Mortgage Performance

Total Loans Serviced - Total conventional active book of business, excluding loans that were liquidated during the month.

Current and Performing - Loans that are making timely payments and are 0 months delinquent as of the reporting month.

Total Delinquent Loans - Loans that are at least one payment past due, i.e., total servicing *minus* current and performing.

30-59 Days Delinquent - Includes loans that are only one payment delinquent.

60-89 Days Delinquent - Includes loans that are only two payments delinquent.

60-plus-days Delinquent - Loans that are two or more payments delinquent, including loans in relief, in the process of foreclosure, or in the process of bankruptcy, i.e., total servicing *minus* current and performing, and 30 to 59 days delinquent loans. Our calculation may exclude loans in bankruptcy process that are less than 60 days delinquent.

Serious Delinquency - All loans in the process of foreclosure *plus* loans that are three or more payments delinquent (including loans in the process of bankruptcy).

In Bankruptcy - Loans in the process of bankruptcy; includes all delinquency status.

Section 2: Completed Foreclosure Prevention Actions

Home Retention Actions - Repayment plans, forbearance plans, charge-offs in lieu of foreclosure, Home Saver Advances, and loan modifications. Home retention actions allow borrowers to retain ownership/occupancy of their homes while attempting to return loans to current and performing status.

Repayment Plans - An agreement between the servicer and a borrower that gives the borrower a defined period of time to reinstate the mortgage by paying normal regular payments plus an additional agreed upon amount in repayment of the delinquency.

Forbearance Plans - An agreement between the servicer and the borrower (or estate) to reduce or suspend monthly payments for a defined period of time after which borrower resumes regular monthly payments and pays additional money toward the delinquency to bring the account current or works with the servicer to identify a permanent solution, such as loan modification or short sale, to address the delinquency.

Charge-offs in Lieu of Foreclosure - A delinquent loan for which collection efforts or legal actions against the borrower are agreed to be not in the Enterprises' best interests (because of reduced property value, a low outstanding mortgage balance, or presence of certain environmental hazards). The servicer charges off the mortgage debt rather than completing foreclosure and taking the property title. The borrower retains the property. The unpaid mortgage balance becomes a lien on the borrower's property, which must be satisfied when the borrower transfers ownership.

HomeSaver Advance (Fannie Mae) - An unsecured personal loan to a qualified borrower to cure his or her payment defaults under a mortgage loan the Enterprises own or guarantee. The borrower must be able to resume regular monthly payments on his or her mortgage.

Loan Modifications - Number of modified, renegotiated, or restructured loans, regardless of performance-to-date under the plan during the month. Terms of the contract between the borrower and the lender are altered with the aim of curing the delinquency (30 days or more past due).

Nonforeclosure-Home Forfeiture Actions- Short sales and deeds-in-lieu of foreclosure. These actions require borrowers to give up their homes. Although homes are forfeited, foreclosure alternatives generally have less adverse impact on borrowers and their credit reports than foreclosure.

Short Sales - A short sale (also called a preforeclosure sale) is the sale of a mortgaged property at a price that nets less than the total amount due on the mortgage (e.g., the sum of the unpaid principal balance, accrued interest, advanced escrows, late fees, and delinquency charges.) The servicer and borrower negotiate payment of the difference between the net sales price and the total amount due on the mortgage.

Deed(s)-in-lieu of Foreclosure - A loan for which the borrower voluntarily conveys the property to the lender to avoid a foreclosure proceeding.

Section 3: Loan Modifications

Increase - Principal and interest after modification is higher than before the modification.

No Increase - Original principal and interest is unchanged after the modifications.

Decrease <=20% - Original principal and interest is decreased by 20 percent or less after modification.

Decrease >20% - Original principal and interest is decreased by more than 20 percent after modification.

Extend Term Only - Remaining term of the loan is longer after modification.

Reduce Rate Only - Loan's rate is lower after modification.

Extend Term and Reduce Rate - Loan's rate reduced and term extended.

Extend Term, Rate Reduction, and Forbear Principal - Modification includes term extension, rate reduction, and forbearance of principal.

Other - A modification that does not fit in any of the above categories. The majority of these loans are capitalized modifications.

Section 4: Third-party Sales and Foreclosures

Third-party Sales - A third party entity purchases the property at the foreclosure sale/auction above the initial bid set forth by Fannie Mae or Freddie Mac.

Foreclosure Starts - The total number of loans referred to an attorney to initiate the legal process of foreclosure during the month. These are loans measured as not being in foreclosure in the previous month but referred to foreclosure in the current month.

Foreclosure Sales - The number of loans that went to foreclosure (sheriff's) sale during the month.